

# Nilo Master Table

## Assembly Instructions

### Box 1

#### **Box 1:**

- 2 x long table frame rails
- 2 x tabletop halves
- 2 x long tabletop frame rails

#### **Box 2:**

- 2 x short table frame rails
- 4 x Table legs
- 4 x short tabletop frame rails
- All hardware



### Box 2



Box 1

Box 2

## Hardware

- Bag A - 16 x Leg Bolts - 
- Bag A - 8 x Table Frame Screws - 
- Bag B - 10 x Small 'L' Brackets - 
- Bag B - 40 x Small 'L' Bracket Screws - 
- Bag C - 24 x Large 'L' Bracket & Slotted Bracket Screws - 
- Bag D - 8 x Tabletop Frame Screws - 

### Large Bag -

4x Large 'L' brackets

4x slotted brackets

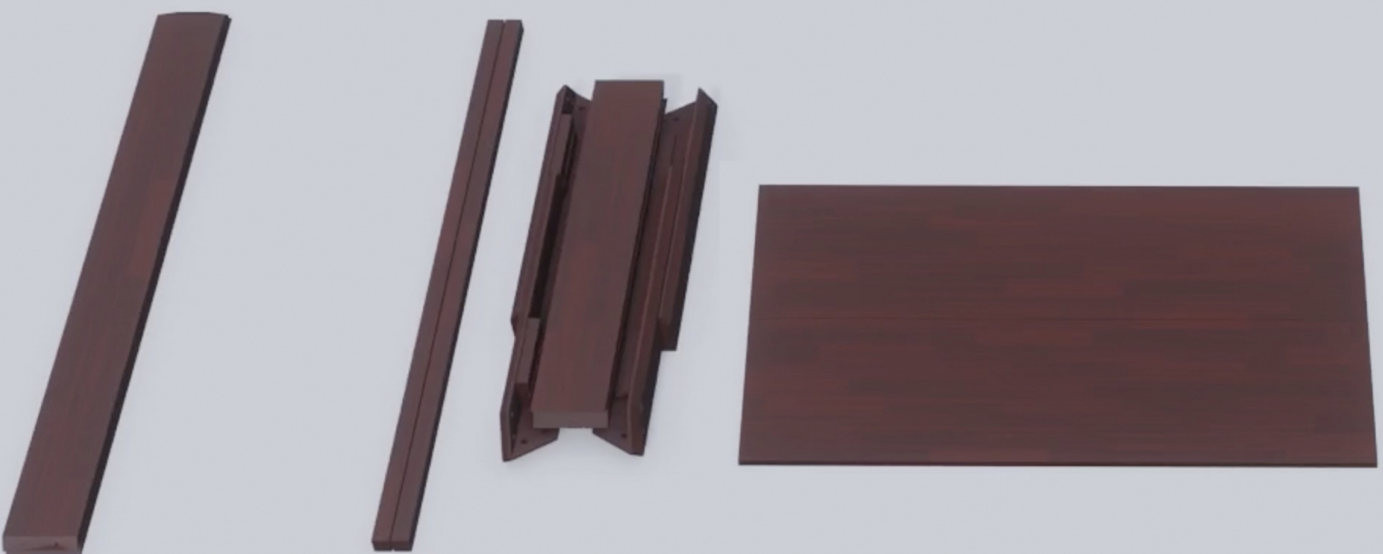
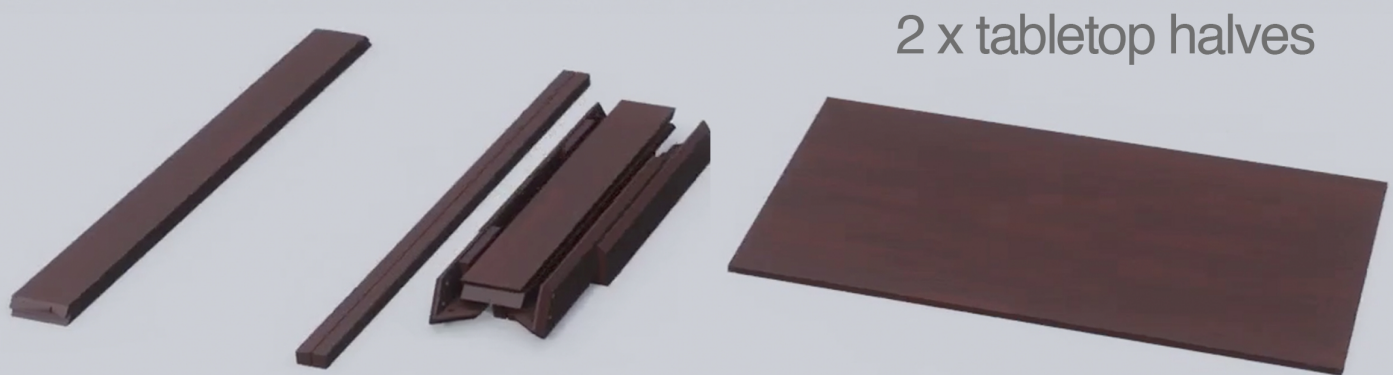




# Step 1

## Assembly Instructions

Place **two tabletop halves** (from box 1) together with the tongue and groove fit in middle.





# Step 2

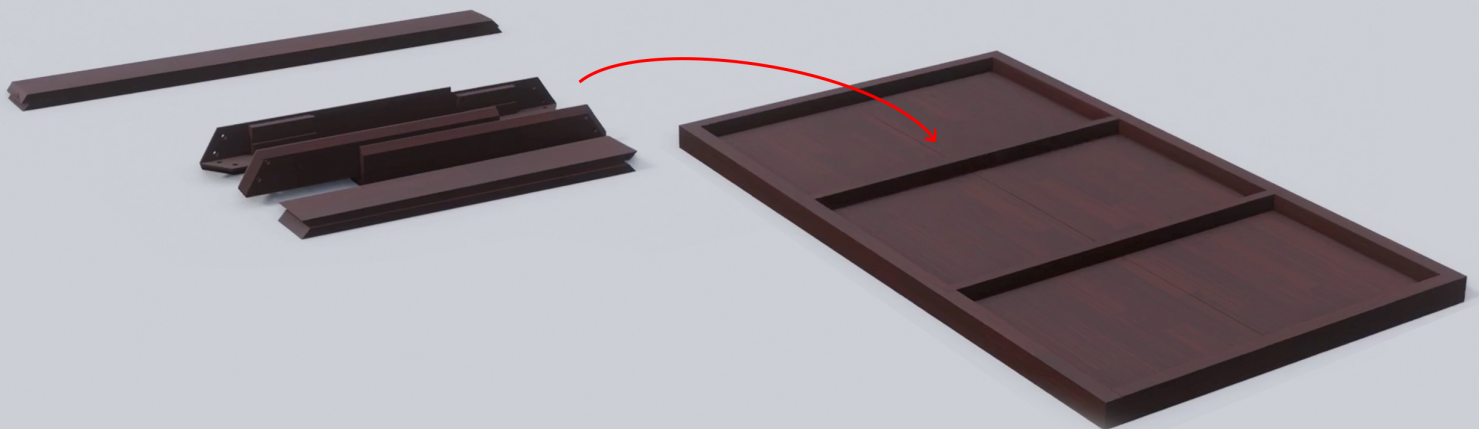
## Assembly Instructions

---

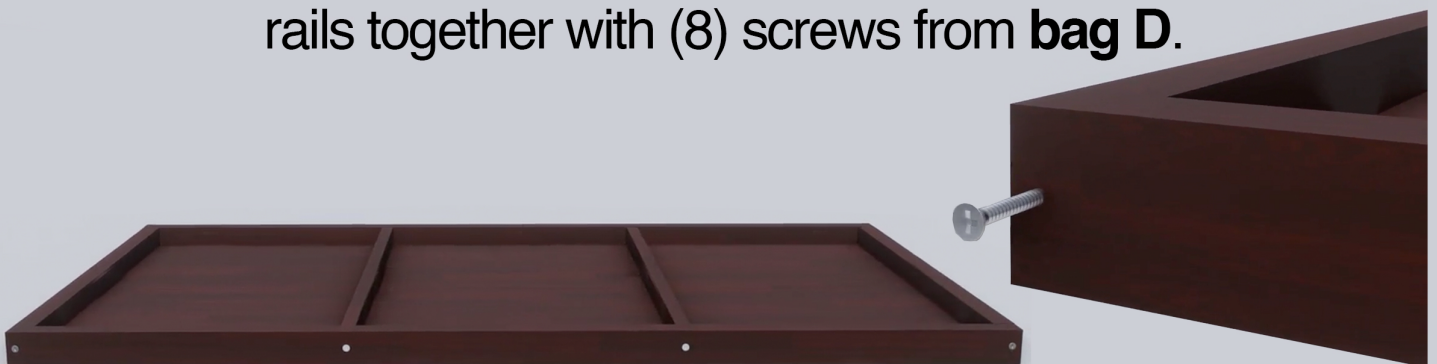
Place two **long tabletop frame rails** (from box 1) onto tabletop halves.



Place four **short tabletop frame rails** (from box 2) onto tabletop halves.



screw tabletop frame rails together with (8) screws from **bag D**.



# Step 3

## Assembly Instructions

Apply **small 'L' brackets** from **bag 'B'** to frame rails and tabletop.

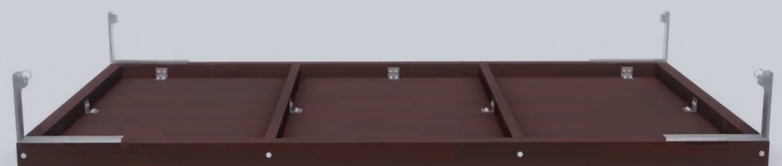
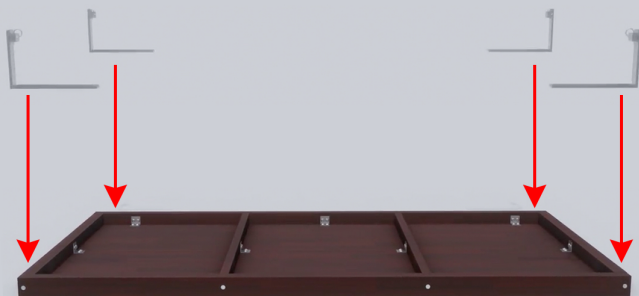


Screw on the **small 'L' brackets** from **bag 'B'** using screws from **bag 'B'**.



# Step 4

Mount **Large 'L' brackets** to corners of tabletop frame using (12) screws from **bag 'C'**.





# Step 5

## Assembly Instructions

Assemble the **table frame** pieces around the upside-down tabletop.

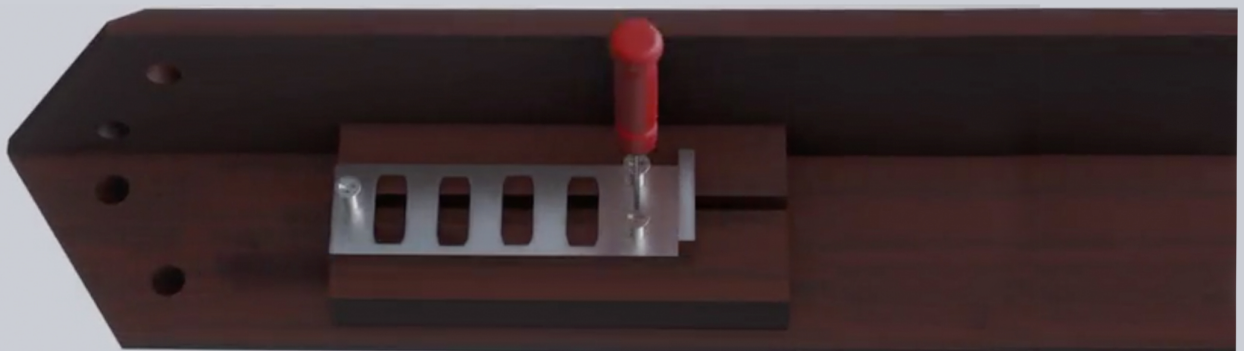


Screw the **table frame** pieces together using the screws from **bag 'D'**.



# Step 6

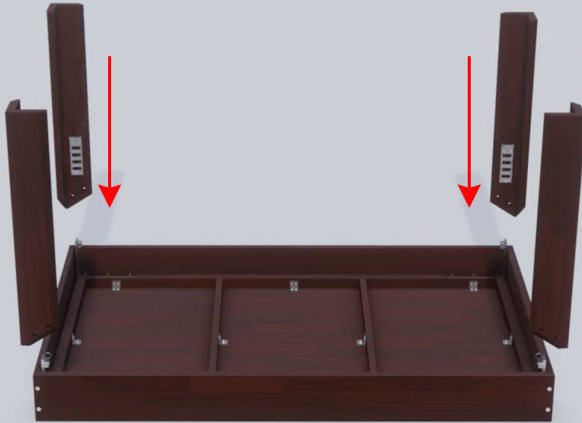
Mount the **slotted brackets** onto the table legs using screws from **bag 'C'**.



# Step 7

## Assembly Instructions

Mount each Leg onto the table individually using the **Leg Bolts** in bag 'A'.



# Step 8

## IMPORTANT:

Make sure that the **Large adjustable 'L' Bracket pins** are secured in each slot on **all four corners**, then carefully flip the table over horizontally.

